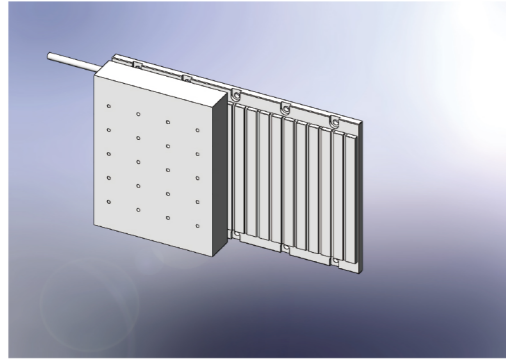




# LINEAR MOTOR LMFH040



**Standard Specifications**

Insulation Capacity	: AC1500V 1min
Operating Range	: 0~25°C
Cooling Method	: Self-cool
Insulation Resistance	: DC500V 100MΩ or more
Operating range (in controlled environment)	: 20~80%(No condensation)
Maximum temperature	: 125°C

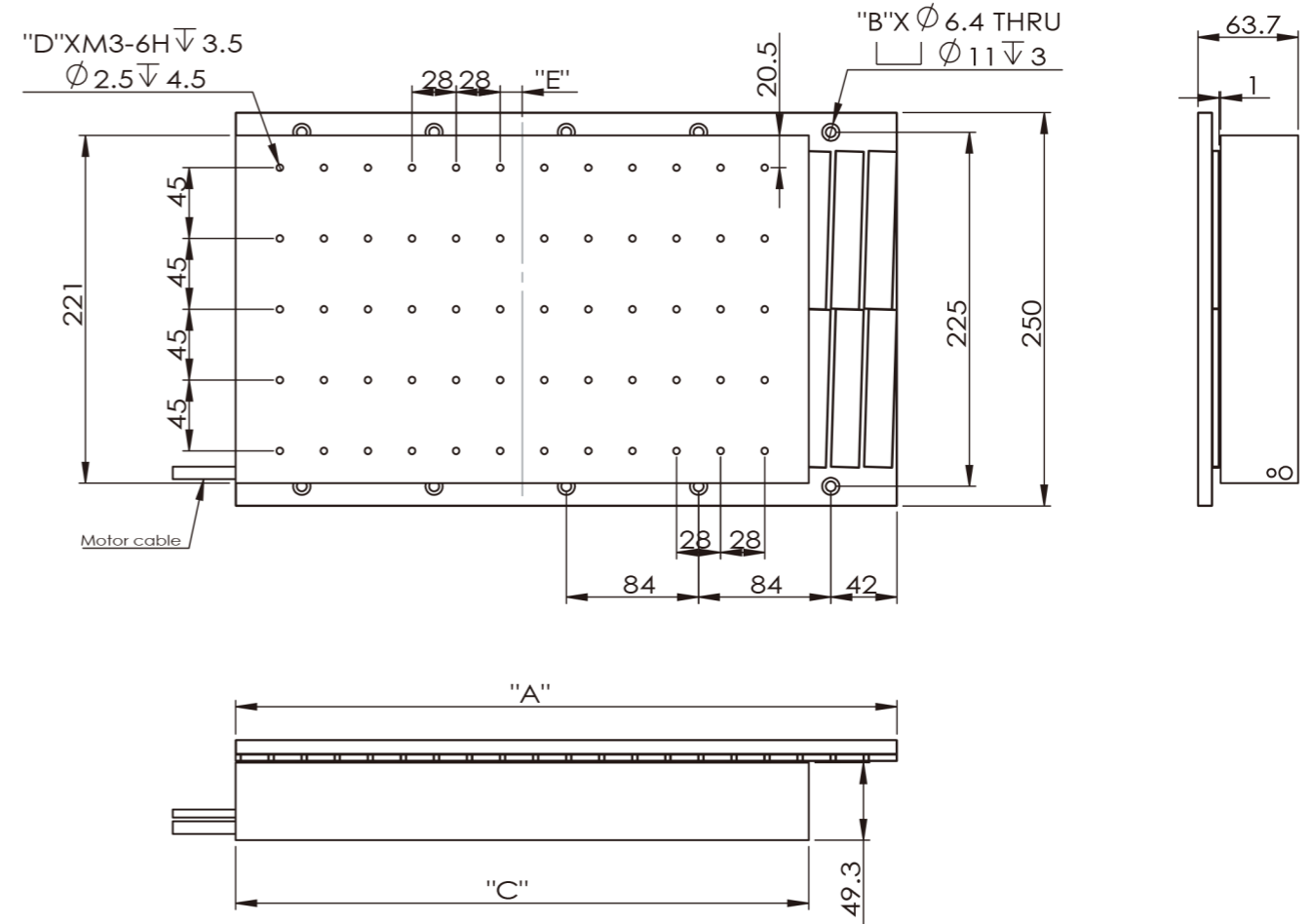
**Specification**

Parameter	Unit	LMFH040-CP364
<b>Performance Specifications</b>		
Continuous Force	N	2700
Peak Force	N	6849
<b>Electrical Specifications</b>		
BEMF Constant(line-)	V/(m/s)	262.40
Continuous Current	Arms	8.40
Peak Current,Stall	Arms	21.30
Force Constant	N/Arms	321.4
Motor Constant	N/√W	127.90
Resistance,25°C (line-line)	Ω	4.35
Inductance,(line-line)	mH	103.00
Thermal Resistance	°C/W	0.14
Attraction Force	Kn	10.695
Maximum Bus Voltage	V <sub>DC</sub>	600
<b>Machanical Specifications</b>		
Coil Weight	kg	26.5
Coil Length	mm	364
Magnet Track Weight	kg/m	22.4
Magnetic Pole Pitch (NN)	mm	42

**Notes:**

- 1.Performance is dependent upon heat sink configuration, system cooling conditions,and ambient temperature.
- 2.Values shown @ 100°C rise above a 25°C ambient temperature,with motor mounted to the specified aluminum heat sink.
- 3.Peak force assumes correct rms current;consult SMJ.
- 4.Force constant and motor constant specified at stall.
- 5.All performance and electrical specifications±10%.

**Dimensions(mm)**



**Magnet Plate**

Model No.	A	B
LMFH040-MP168	168	4
LMFH040-MP252	252	6
LMFH040-MP420	420	10

**Coil Plate**

Model No.	C	D	E
LMFH040-CP364	364	60	14