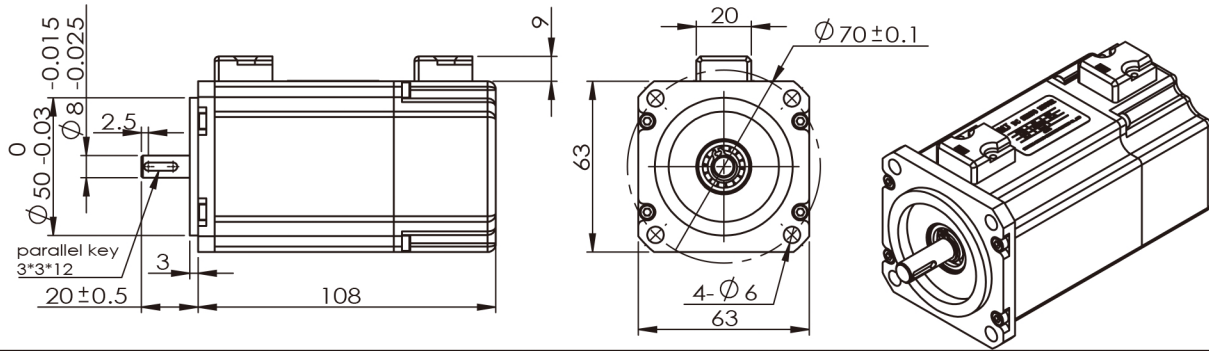


BMP62B | Brushless | Brake



coreless motor | Brushless

Motor Data

	motor model		BMP6212B	BMP6224B	BMP6236B	
1	no load voltage	V	12	24	36	volts
2	no load speed	Wnl	4000	4000	6000	rpm
3	no load current	Inl	1.2	0.6	0.9	Amps
4	nominal voltage	Vc	12	24	36	VDC
5	nominal torque	Tc	0.6	0.6	0.6	Nm
6	nominal speed	Wc	3000	3000	4520	rpm
7	nominal current	Ic	22.8	11.4	11.4	amps
8	output power	Pc	188	188	284	watts
9	torque constant	Kt	0.029	0.058	0.058	Nm / apm
10	back EMF constant	Kv	329.3	164.6	164.6	rpm / volt
		Ke	3.03	6.07	6.07	V / Krpm
11	terminal resistance	Rt	0.08	0.31	0.31	Ω
12	cogging and hysteresis torque	Tc Th	0	0	0	mNm
13	terminal inductance	L	9	35	35	μH
14	mechanical time constant	Tm	18	18	18	ms
15	electrical time constant	Te	0.114	0.114	0.114	ms
16	weight	Wt	1.21	1.21	1.21	kg
17	max. efficiency	η	80	82	84	%
18	max. permissible rotor temperature	Temp	120			°C
19	max. output power	Pmax	300	330	710	W
20	terminal definitions	U: green V: black W: red +5V: yellow GND:grey H1: brown H2: orange H3: blue Thermistor: violet				

Graph

Torque - Speed - Current

